

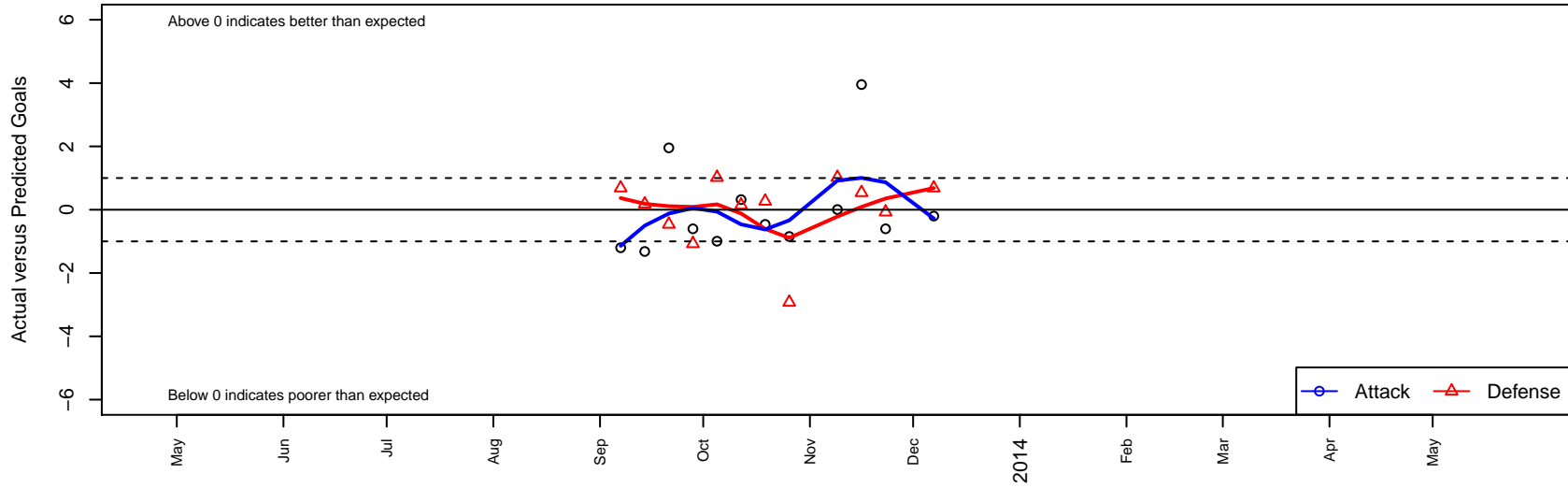
BYSC Select Cambell G01

Bellevue Youth SC
 Bellevue, WA
 G01 total strength=182
 attack=0.13 defense=0.1
 fall league = NPSL G12D3
 alt names used:

Venues played:
 NPSL G12D3



BYSC Select Cambell G01
 Dots are actual minus expected GF (blue circles) and GA (red triangles).
 Blue line is smoothed change in attack strength. Red is smoothed change in defense strength.



| | date | home | | away | | venue | pred.home | pred.away |
|------|-------------|---------------------------------|---|--------------------------------|---|--------------|------------------|------------------|
| 6823 | 2013-12-07 | BYSC Select Cambell G01 | 1 | Silver Lake SC Panthers G01 | 0 | NPSL G12D3 | 1.20 | 0.69 |
| 6677 | 2013-11-23 | BYSC Select Cambell G01 | 0 | Granite Falls Thunderbirds G01 | 2 | NPSL G12D3 | 0.60 | 1.93 |
| 6589 | 2013-11-16 | MIFC Grizzlies G01 | 0 | BYSC Select Cambell G01 | 7 | NPSL G12D3 | 0.54 | 3.05 |
| 6484 | 2013-11-09 | Mukilteo Rush G01 | 1 | BYSC Select Cambell G01 | 1 | NPSL G12D3 | 2.02 | 0.99 |
| 6188 | 2013-10-26 | Silver Lake SC Blueberries G01 | 5 | BYSC Select Cambell G01 | 0 | NPSL G12D3 | 2.07 | 0.85 |
| 6029 | 2013-10-19 | Newport FC Predators-Galaxy G01 | 1 | BYSC Select Cambell G01 | 1 | NPSL G12D3 | 1.27 | 1.46 |
| 5866 | 2013-10-12 | BYSC Select Cambell G01 | 1 | Storm King G01 | 3 | NPSL G12D3 | 0.68 | 3.14 |
| 5681 | 2013-10-05 | BYSC Select Cambell G01 | 0 | Mukilteo Rush G01 | 1 | NPSL G12D3 | 0.99 | 2.02 |
| 5511 | 2013-09-28 | Granite Falls Thunderbirds G01 | 3 | BYSC Select Cambell G01 | 0 | NPSL G12D3 | 1.93 | 0.60 |
| 5375 | 2013-09-21 | BYSC Select Cambell G01 | 5 | MIFC Grizzlies G01 | 1 | NPSL G12D3 | 3.05 | 0.54 |
| 5207 | 2013-09-14 | BYSC Select Cambell G01 | 0 | Seattle United W White G01 | 1 | NPSL G12D3 | 1.32 | 1.18 |
| 5056 | 2013-09-07 | Silver Lake SC Panthers G01 | 0 | BYSC Select Cambell G01 | 0 | NPSL G12D3 | 0.69 | 1.20 |